

NEOMETRIX

PCB Thermal Test Bench

About

Printed Circuit Boards (PCBs) need to go through a series of extensive tests and inspections at each step of the manufacturing process to assure the products meets or exceed specifications.

Reliability decreases exponentially in electronic components due to heat problems. Thermal Air series of thermal testing cycling test systems helps manufacturers design ICs, chips, and PCBs for superior thermal performance.



NEOMETRIX

Specifications

Neometrix Thermal Tester is Temperature Forcing Systems and environmental test chambers provide quality assurance through temperature cycling testing. We have used standard highly reliable FLIR camera for thermal scanning.

Thermal Tester is a mobile thermal testing solution capable of environmental stress testing throughout the semiconductor design, manufacturing, and back-end test processes.

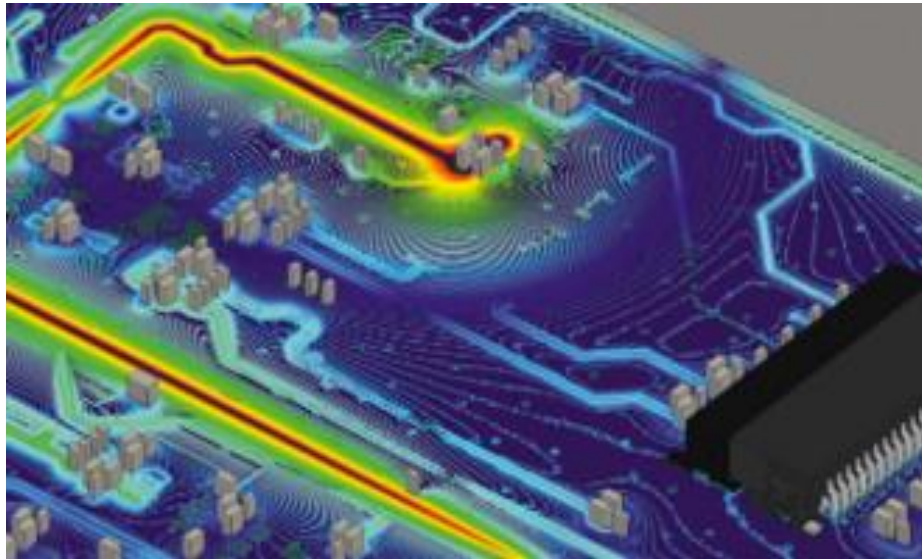


NEOMETRIX

Application

Printed Circuit Boards (PCBs) need to go through a series of extensive tests and inspections at each step of the manufacturing process to assure the products meets or exceed specifications.

Reliability decreases exponentially in electronic components due to heat problems. Thermal Air series of thermal testing cycling test systems helps manufacturers design ICs, chips, and PCBs for superior thermal performance.



Key features

Thermal Tester is having following major features:

- (a) Wide angle (min 50 degree horizontal) Infrared imaging camera with 640X480 pixels resolution or better.
- (b) Thermal analysis software for hotspot and other faults detection.
- (c) Automated enclosure with PCB test fixture for testing of PCB of dimension 16X16 inch or better.
- (d) Power supply module with minimum eight relay to provide 230VAC/3A/50Hz and 28VDC/5A or better.
- (e) Temperatures measurement range: -20 to 200 degrees Celsius.

