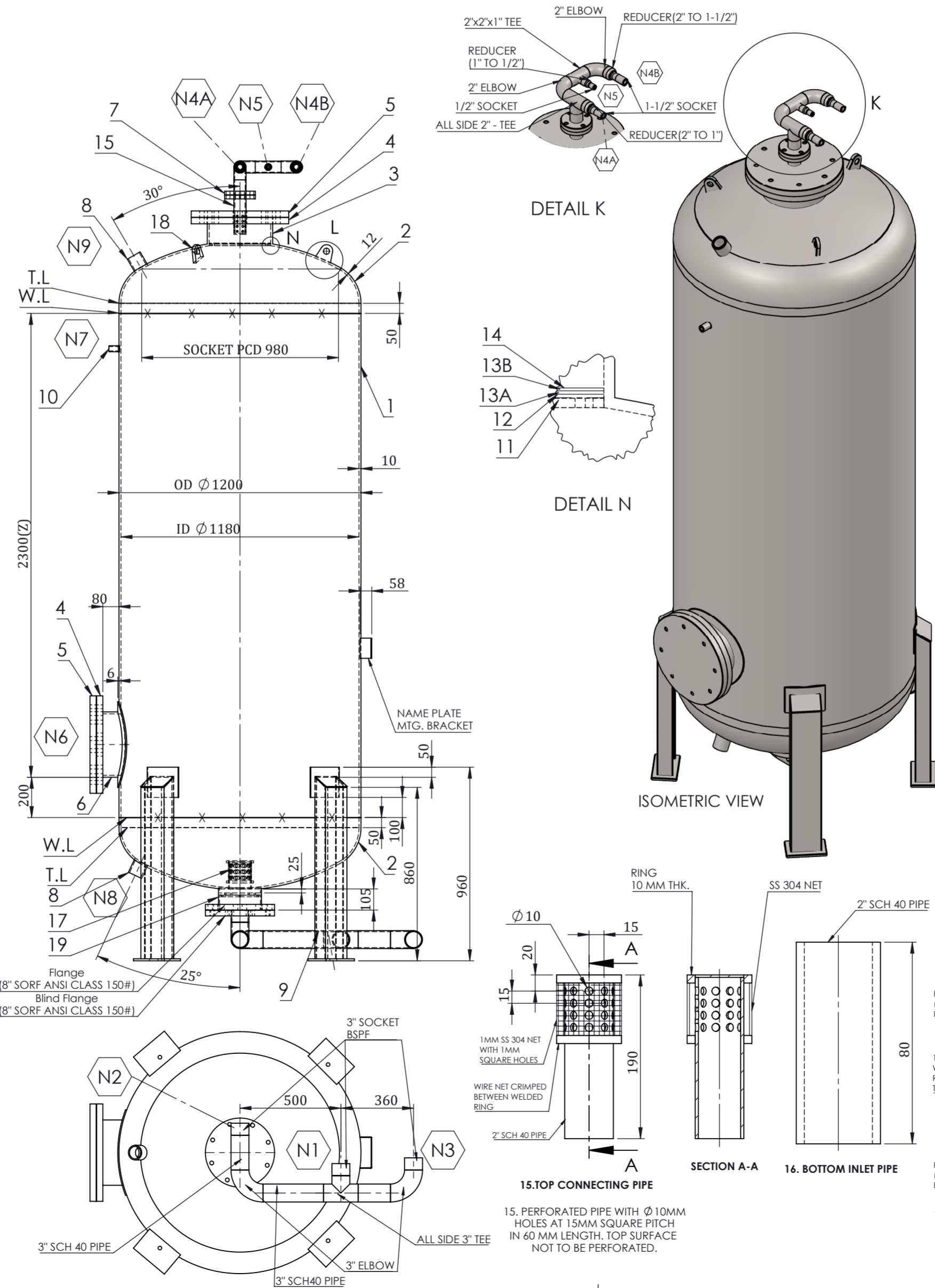
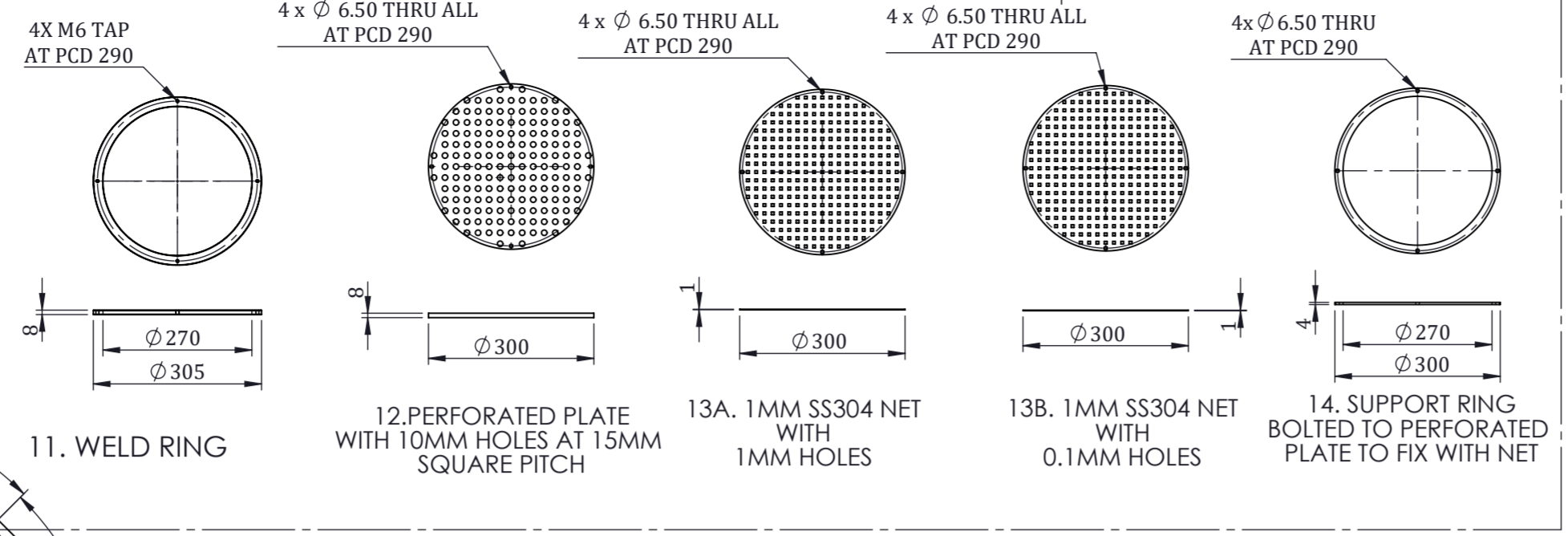
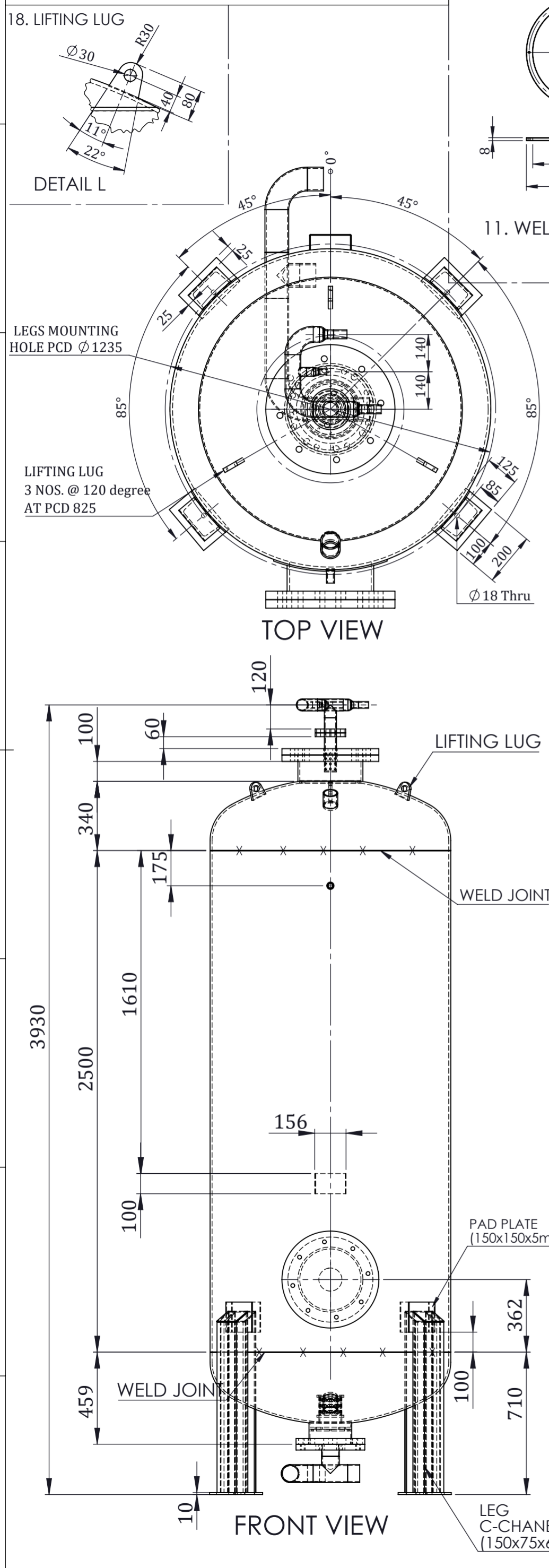


THIS DWG. IS SOLE PROPERTY OF NEOMETRIX ENGINEERING PVT. LTD. UNAUTHORISED USE OF THIS DWG. OR MAKING PRODUCT AS PER THIS DWG. WITHOUT OUR PERMISSION OR ANY OTHER MISUSE IS NOT PERMITTED.



S.NO.	ITEM	SPECIFICATION	MATERIAL	QTY.
1	SHELL	ROLLED OD 1200 MM, 10MM THK.	IS 2062 GR. B	1
2	DISHED END	ELLIPTICAL 12MM THK	IS 2062 GR. B	2
3	NECK PIPE	12" SCH 40 SEAMLESS PIPE	IS 2062 GR. B	1
4	FLANGE	12" SORF ANSI CLASS 150#	IS 2062 GR. B	2
5	BLIND FLANGE	12" BLIND ANSI CLASS 150#	IS 2062 GR. B	2
6	HAND HOLE PIPE	12" SCH 40 SEAMLESS PIPE	IS 2062 GR. B	1
7	FLANGE	2" SORF ANSI CLASS 150#	IS 2062 GR. B	2
8	SOCKET	2" BSPF FLAT FACE CLASS 3000 WITH PLUG	IS 2062 GR. B	2
9	LEG WITH PAD PLATE	C CHANNEL (150x75x6.5)	IS 2062 GR. B	4
10	SOCKET	1/8" BSPF SOCKET 3000 CLASS	IS 2062 GR. B	1
11	WELD RING	AS PER DWG. 11	IS 2062 GR. B	1
12	PERFORATED PLATE	AS PER DWG. 12	IS 2062 GR. B	1
13A	WIRE NET (1MM HOLES)	AS PER DWG. 13 A	SS 304	1
13B	WIRE NET (0.1MM HOLES)	AS PER DWG. 13 B	SS 304	1
14	SUPPORT RING	AS PER DWG. 14	IS 2062 GR. B	1
15	TOP PERFORATED PIPE	AS PER DWG. 15	IS 2062 GR. B	1
17	PERFORATED PIPE	AS PER DWG. 17	IS 2062 GR. B	1
18	LIFTING LUG	AS PER DWG. 18	IS 2062 GR. B	3
19	BOTTOM PIPE	8" SCH 40 SEAMLESS PIPE	IS 2062 GR. B	1

No.	NOZZLE	SIZE	STANDARD	QTY.
1	N1	AIR INLET -3" BSPF	ANSI B 16.11	1
2	N2	AIR EQUILIZER-3" BSPF	ANSI B 16.11	1
3	N3	EXHAUST PORT-3" BSPF	ANSI B 16.11	1
4	N4 (A&B)	OXYGEN OUTLET 1-1/2" BSPF	ANSI B 16.11	2
5	N5	OXYGEN OUTLET- 1/2" BSPF	ANSI B 16.11	1
6	N6	HAND HOLE-8" ANSI CLASS 150#	ANSI B 16.11	1
7	N7	GAUGE PORT-1/8" BSPTF	ANSI B 16.11	1
8	N8	DRAIN PORT-2" BSPF	ANSI B 16.11	1
9	N9	FILLING PORT-2" BSPF	ANSI B 16.11	1

MODEL	NAMO 1500
DESIGN CODE	ASME SEC-VIII DIV-I
WORKING PRESSURE	8.5 Kg/cm ²
DESIGN PRESSURE	9.3 Kg/cm ²
HYD. TEST PRESSURE	14.5 Kg/cm ²
DESIGN TEMP.	50 degree celcius
CORROSION ALLOWANCE	3MM
SHELL THICKNESS	10 MM
DISHEND THICKNESS	12 MM

NOTE:-

- ALL DIMENSIONS ARE IN MM.
- SURFACE FINISH: SHOT BLASTING ON INTERNAL & EXTERNAL SURFACE.
- PAINTING: POWDER COATING ON EXTERNAL SURFACE. SIEMENS GREY-RAL 7035
- HYDRO TESTING & HOT AIR FLUSHING FOR MOISTURE REMOVAL WITH CERTIFICATION.
- MOUNTING PROVISION FOR OTHER ITEMS WILL BE REQUIRED ON PSA TOWER SHELLS. THIS WILL BE CONVEYED DURING ASSEMBLY AFTER MANUFACTURING AT SUPPLIER FACTORY
- ALL NUT & BOLTS TO BE SS-304 WHICH WILL BE USED INSIDE.

NEOMETRIX
www.neometrixgroup.com

NEOMETRIX ENGINEERING PVT LTD
E-148, SECTOR 63, NOIDA, UP-201301
Tel No.: 0120 4500800
Fax No.: 0120 4500888
E-mail: contact@neometrixgroup.com
Design Dept.: design@neometrixgroup.com

TITLE	PSA MEDICAL OXYGEN GENERATION PLANT			QA No.	
SUB-TITLE	MOX-PSA TOWER-1500 LPM			Cross Ref Doc No.	
SRS CODE	A2764			Customer Dwg Ref No.	
CUSTOMER				NOTE:	
END USER					
TD/PO. No.					
PROJECTION	DRWN	M.F	05-08-2021	SIZE	SCALE
	CHK.	R.K	05-08-2021	A3	NFS
	APPR.	S.P.S	05-08-2021		
				SHEET	No. OF
				01	01
				NEO DWG No.	
					REV
					T-PED-A2764-MDWG-PSA TOWER-NAMO 1500
					00