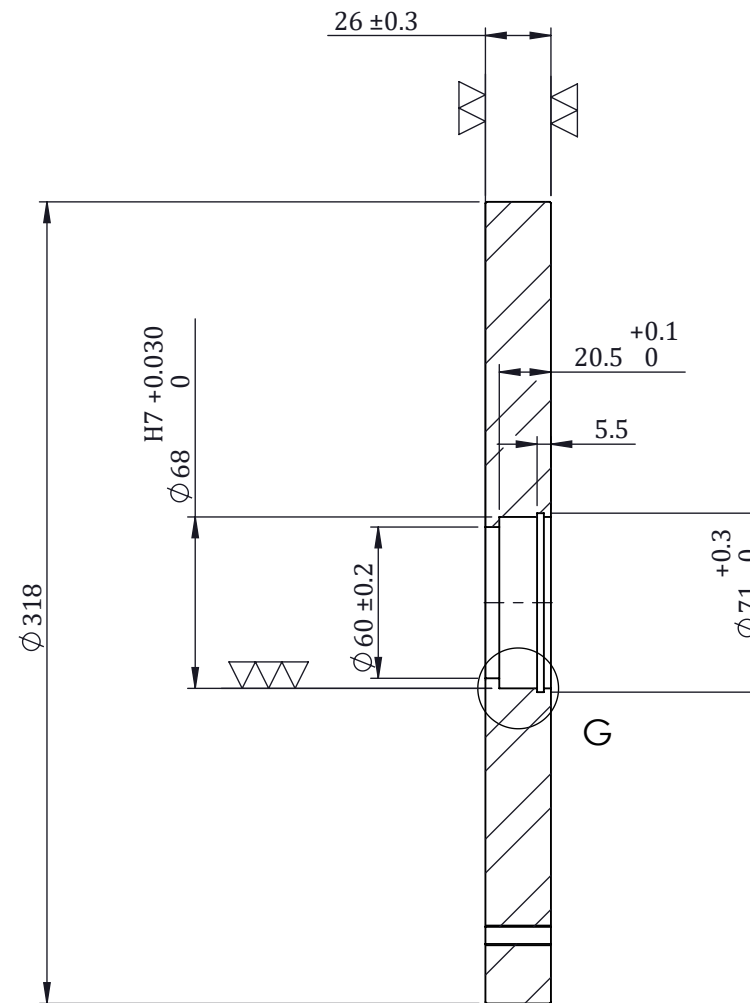
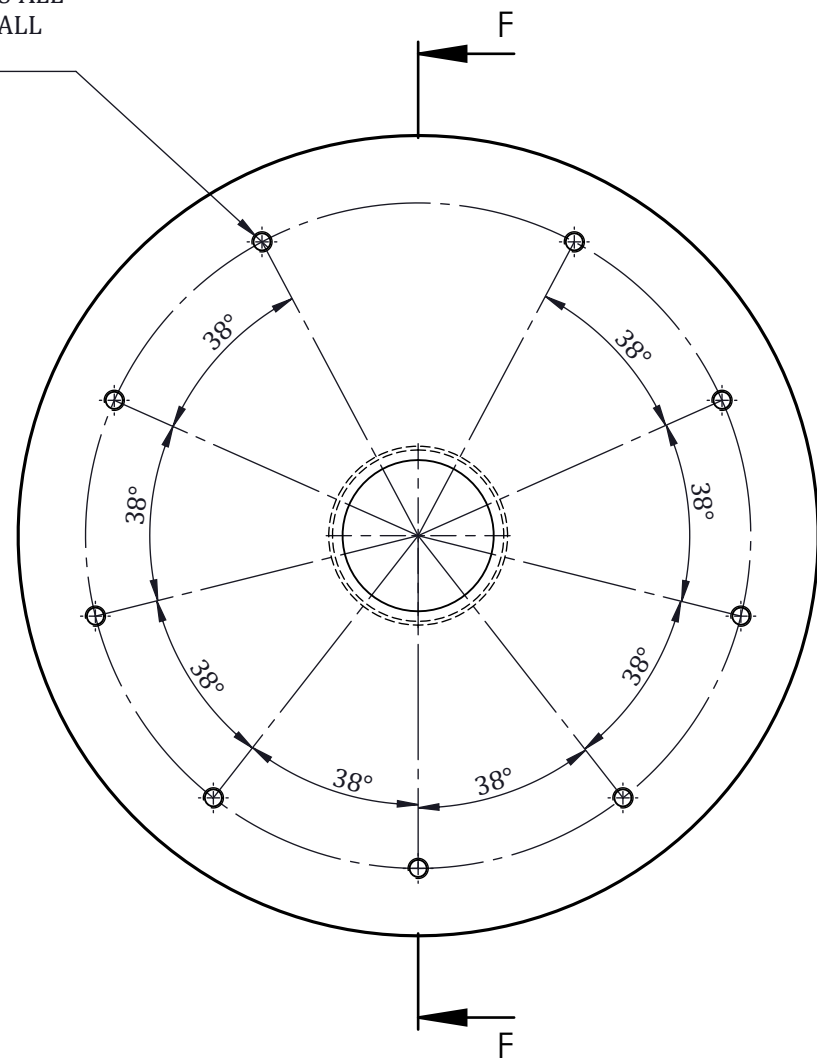
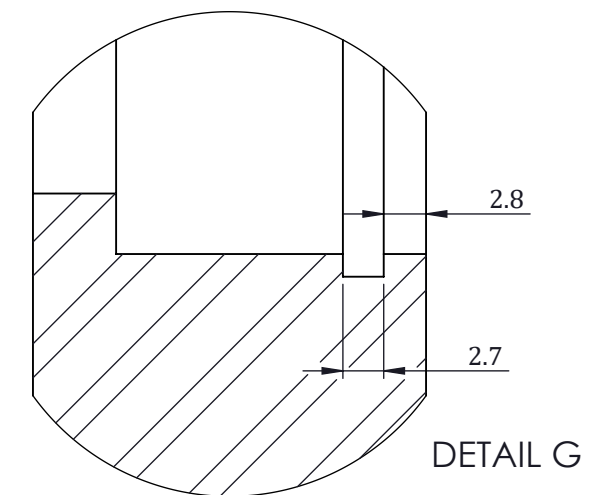


THIS DWG. IS SOLE PROPERTY OF NEOMETRIX ENGINEERING PVT. LTD.
 UNAUTHORISED USE OF THIS DWG. OR MAKING PRODUCT AS PER THIS
 DWG. WITHOUT OUR PERMISSION OR ANY OTHER MISUSE IS NOT
 PERMITTED.

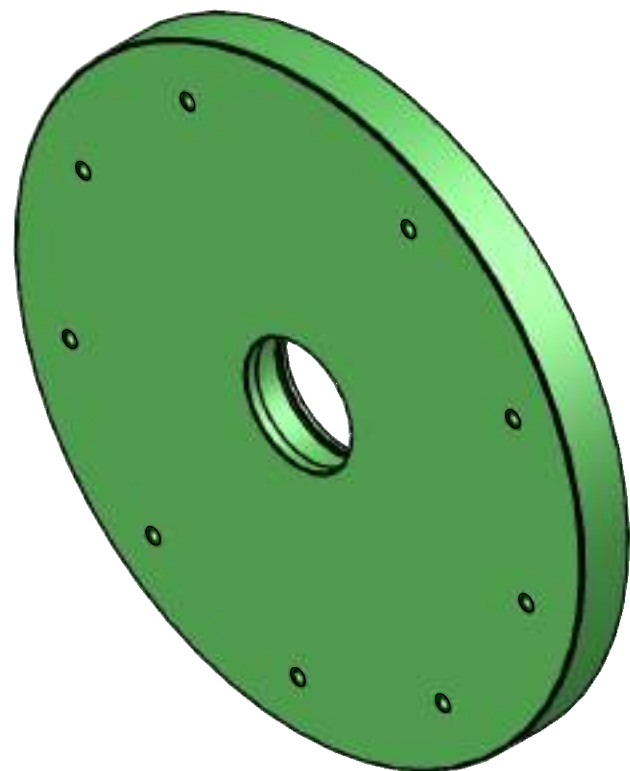
10 x ϕ 6.80 THRU ALL
 M8 - 6H THRU ALL
 AT PCD 264



SECTION F-F



DETAIL G



NOTE:-

1. ALL DIMENSIONS ARE IN MM.
2. MATERIAL- MS (IS 2062)
3. QTY- 2 NOS.
4. WEIGHT-15.5 Kg.(Approx)

+++ NEOMETRIX www.neometrixgroup.com		NEOMETRIX ENGINEERING PVT. LTD. E-148, Sector-63, Noida, UP-201301 Tel. No. :- 0120-4500800 Fax No. :- 0120-4500888 Email :- contact@neometrixgroup.com	
MAIN TITLE	ROTOR TESTING FACILITY	QA No.	
SUB - TITLE	ROTOR DISC	Cross Ref. Doc. No.	
CODE	A1973	Customer Dwg./Ref. No.	
QYT.	2	NOTE:-	
MATERIAL	MS		
HARDNESS	--		
PROJECTION	DRAWN BY & DATE	M.F	13-04-2021
	CHECKED BY & DATE	AS	13-04-2021
	APPROVED BY & DATE	S.P.S	13-04-2021
		Size	A3
		Scale	NTS
		Sheet No.	01
		Of	01
		NEO. DWG. No.	T-PED-A1973-ROTOR DISC
		REV	00