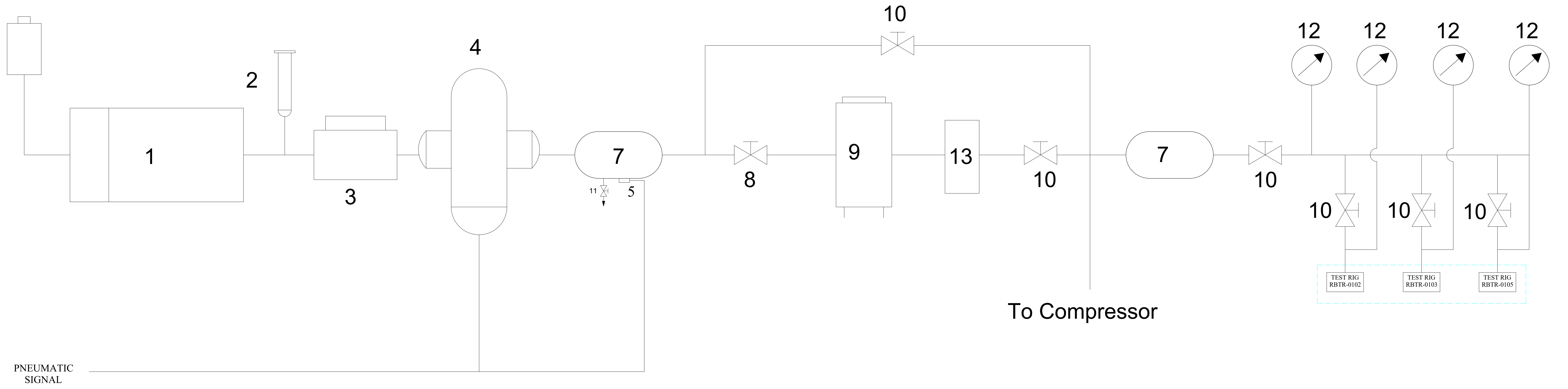


THIS DWG. IS SOLE PROPERTY OF NEOMETRIX ENGINEERING PVT. LTD.
 UNAUTHORISED USE OF THIS DWG. OR MAKING PRODUCT AS PER THIS DWG.
 WITHOUT OUR PERMISSION OR ANY OTHER MISUSE IS NOT PERMITTED.



PART LIST

ITEM No.	DESCRIPTION	No. OFF	REMARKS
1	COMPRESSOR WITH COOLER	1	--
2	SAFETY VALVE	1	--
3	CHECK VALVE 1-1/4" (METAL SEATED)	1	--
4	DRIP CUP WITH AUTO DRAIN VALVE	1	--
5	AUTO DRAIN VALVE	1	--
6	RESERVOIR 240 LTP _S	1	--
7	RESERVOIR 450 LTP _S	1	--
8	ISOLATING COCK 1-1/4" VENTED	1	--
9	TWIN TOWER AIR DRYER	1	--
10	ISOLATING COCK 1-1/4"	6	--
11	DRAIN COCK 1/2"	2	--
12	PRESSURE GAUGE (0 TO 16 BAR)- 4"	4	--
13	FINAL FILTER	1	--

		NEOMETRIX ENGINEERING PVT. LTD. E-148, Sector-63, Noida, UP-201301 Tel. No. :- 0120-4500800 Fax No. :- 0120-4500888 Email :- contact@neometrixgroup.com	
MAIN TITLE SUB - TITLE CODE CUSTOMER END USER PO. No.	COFMOW TEST RIG PNEUMATIC CIRCUIT DIAGRAM A2586 ----- ----- -----	Q.A. No. Cross Ref. Doc. No. Customer Dwg./Ref. No. Note:	01
PROJECTION DRAWN BY & DATE CHECKED BY & DATE APPROVED BY & DATE	M.F. 22/11/2021 M.F. 22/11/2021 S.P.S. 22/11/2021	Size Scale Sheet No. 01 A3 NTS B1 01	NEO. DWG. No. T-DAP-A2586-PDWG REV 00