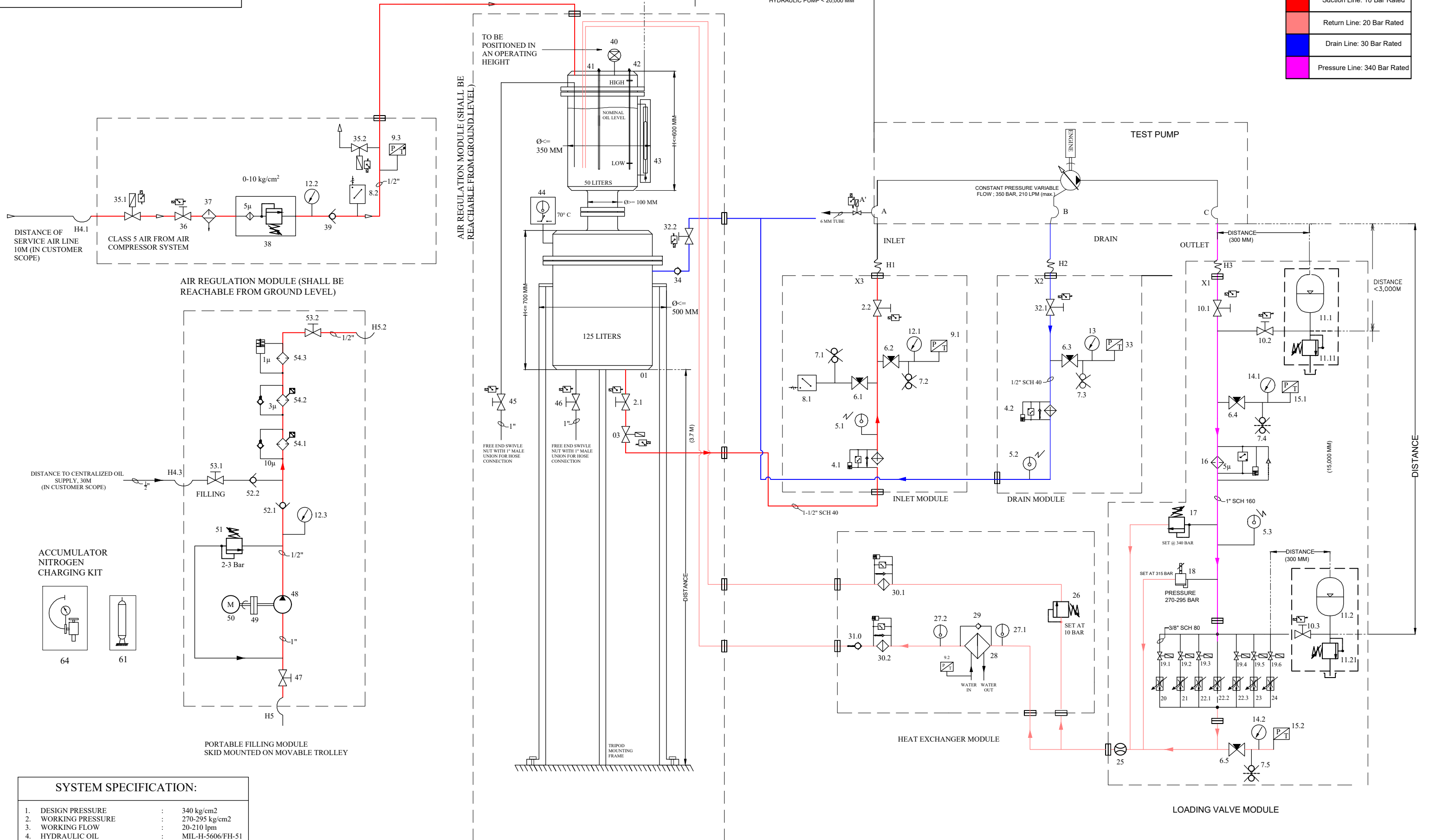


THIS DWG. IS SOLE PROPERTY OF NEOMETRIX ENGINEERING PVT. LTD. UNAUTHORISED USE OF THIS DWG. OR MAKING PRODUCT AS PER THIS DWG. WITHOUT OUR PERMISSION OR ANY OTHER MISUSE IS NOT PERMITTED.

	Suction Line: 10 Bar Rated
	Return Line: 20 Bar Rated
	Drain Line: 30 Bar Rated
	Pressure Line: 340 Bar Rated



SYSTEM SPECIFICATION:

1. DESIGN PRESSURE	: 340 kg/cm ²
2. WORKING PRESSURE	: 270-295 kg/cm ²
3. WORKING FLOW	: 20-210 lpm
4. HYDRAULIC OIL	: MIL-H-5606/FH-51
5. VISCOSITY	: 15 CST @ 40°C
6. DENSITY	: 0.8735 AT 15.6°C
7. TANK CAPACITY	: 175 LITERS
8. TANK MAX. PRESSURE	: 10 kg/cm ²
9. MAX. TEMP. AT PUMP OUTLET	: 100°C
10. MAX. TEMP. AT PUMP INLET	: 80°C

NOTE:-

- THIS IS TENTATIVE DRAWING, SUBJECT TO CHANGE.

HYDRAULIC CIRCUIT DIAGRAM

NEOMETRIX		NEOMETRIX ENGINEERING PVT. LTD. E-148, Sector-63, Noida, UP-201301 Tel. No. :- 0120-4500800 Fax No. :- 0120-4500888 Email :- contact@neometrixgroup.com	
MAIN TITLE	HYDRAULIC LOADING SYSTEM	QA No.	
SUB - TITLE	HYDRAULIC CIRCUIT DIAGRAM	Cross Ref. Doc. No.	
CODE	A4445	Customer Dwg./Ref. No.	
CUSTOMER	---	Note:	---
END-USER	---		
PO. NO.	---		
PROJECTION	DRAWN BY & DATE	M.F	10/08/2023
	CHECKED BY & DATE	A.B	10/08/2023
	APPROVED BY & DATE	S.P.S	10/08/2023
	Size	Scale	Sheet No. of
	A3	NTS	01 of 01
	NEO. DWG. No.		REV
	T-PED-A4445-HYDRAULIC CIRCUIT		00