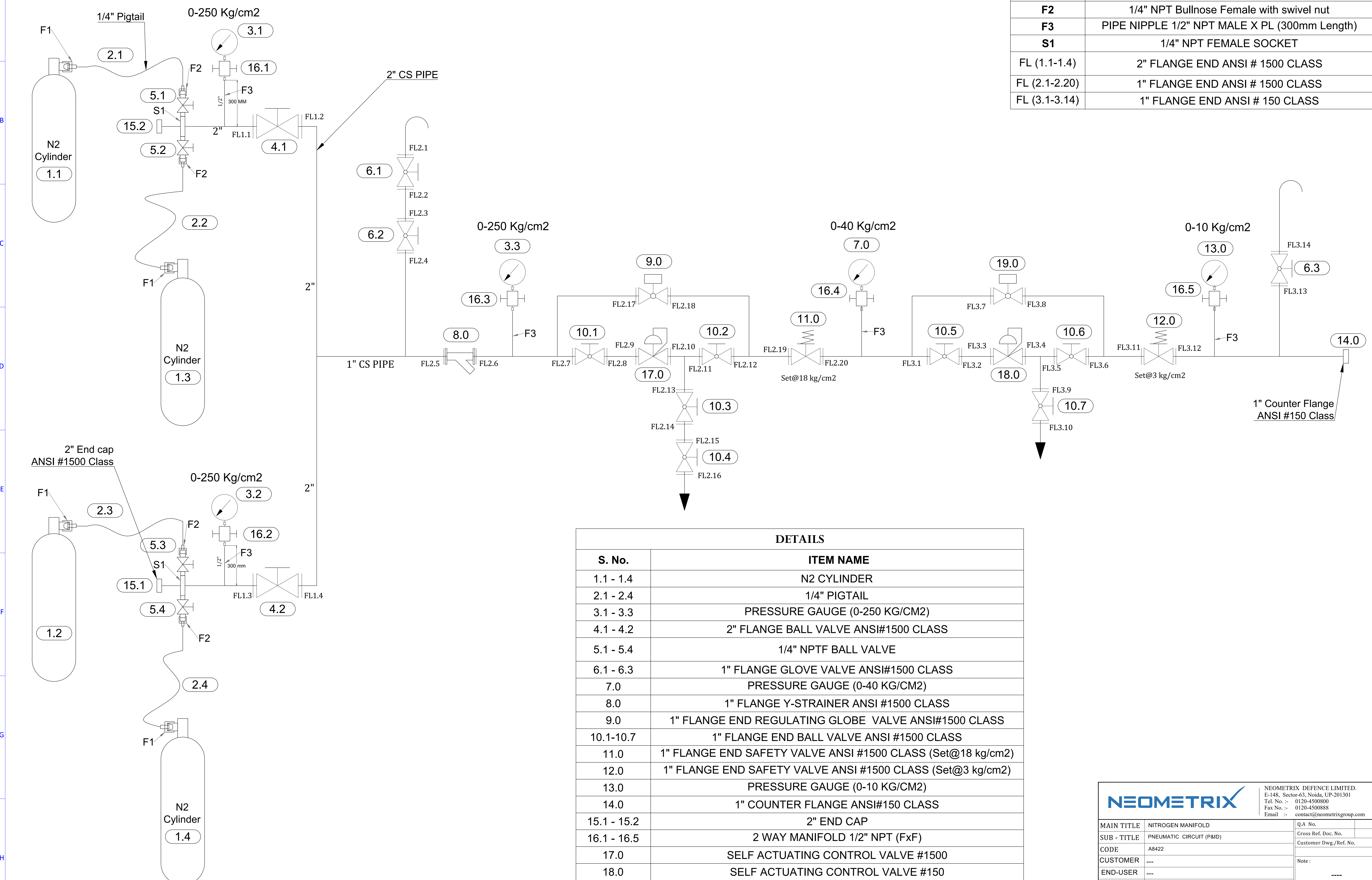


THIS DWG. IS SOLE PROPERTY OF NEOMETRIX DEFENCE LIMITED.
 UNAUTHORISED USE OF THIS DWG. OR MAKING PRODUCT AS PER THIS
 DWG. WITHOUT OUR PERMISSION OR ANY OTHER MISUSE IS NOT
 PERMITTED.

FITTING LIST	
F1	3/4" BSP Female BULLNOSE FEMALE FITTING
F2	1/4" NPT Bullnose Female with swivel nut
F3	PIPE NIPPLE 1/2" NPT MALE X PL (300mm Length)
S1	1/4" NPT FEMALE SOCKET
FL (1.1-1.4)	2" FLANGE END ANSI # 1500 CLASS
FL (2.1-2.20)	1" FLANGE END ANSI # 1500 CLASS
FL (3.1-3.14)	1" FLANGE END ANSI # 150 CLASS



DETAILS	
S. No.	ITEM NAME
1.1 - 1.4	N2 CYLINDER
2.1 - 2.4	1/4" PIGTAIL
3.1 - 3.3	PRESSURE GAUGE (0-250 KG/CM2)
4.1 - 4.2	2" FLANGE BALL VALVE ANSI#1500 CLASS
5.1 - 5.4	1/4" NPTF BALL VALVE
6.1 - 6.3	1" FLANGE GLOVE VALVE ANSI#1500 CLASS
7.0	PRESSURE GAUGE (0-40 KG/CM2)
8.0	1" FLANGE Y-STRAINER ANSI #1500 CLASS
9.0	1" FLANGE END REGULATING GLOBE VALVE ANSI#1500 CLASS
10.1-10.7	1" FLANGE END BALL VALVE ANSI #1500 CLASS
11.0	1" FLANGE END SAFETY VALVE ANSI #1500 CLASS (Set@18 kg/cm2)
12.0	1" FLANGE END SAFETY VALVE ANSI #1500 CLASS (Set@3 kg/cm2)
13.0	PRESSURE GAUGE (0-10 KG/CM2)
14.0	1" COUNTER FLANGE ANSI#150 CLASS
15.1 - 15.2	2" END CAP
16.1 - 16.5	2 WAY MANIFOLD 1/2" NPT (FxF)
17.0	SELF ACTUATING CONTROL VALVE #1500
18.0	SELF ACTUATING CONTROL VALVE #150
19.0	1" FLANGE END REGULATING GLOBE VALVE ANSI#150 CLASS

NEOMETRIX		NEOMETRIX DEFENCE LIMITED. E-148, Sector-63, Noida, UP-201301 Tel. No. :- 0120-4500800 Fax No. :- 0120-4500888 Email :- contact@neometrixgroup.com	
PROJECTION	DRAWN BY & DATE	M.F	24/06/2025
	CHECKED BY & DATE	P.N	24/06/2025
	APPROVED BY & DATE	S.P.S	24/06/2025
Size	Scale	Sheet No.	Of
A3	NTS	01	01
NEO. DWG. No.			REV
T-DAP-A8422-PDWG			02