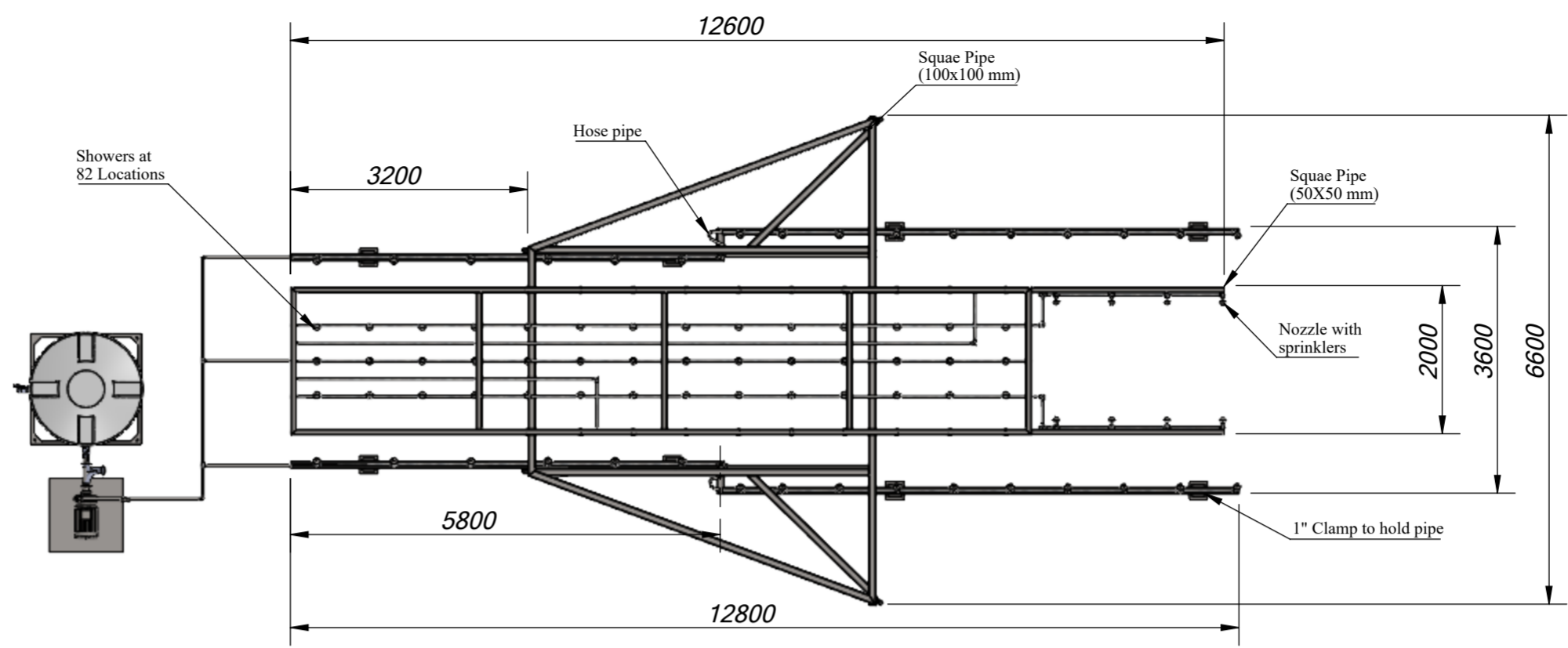
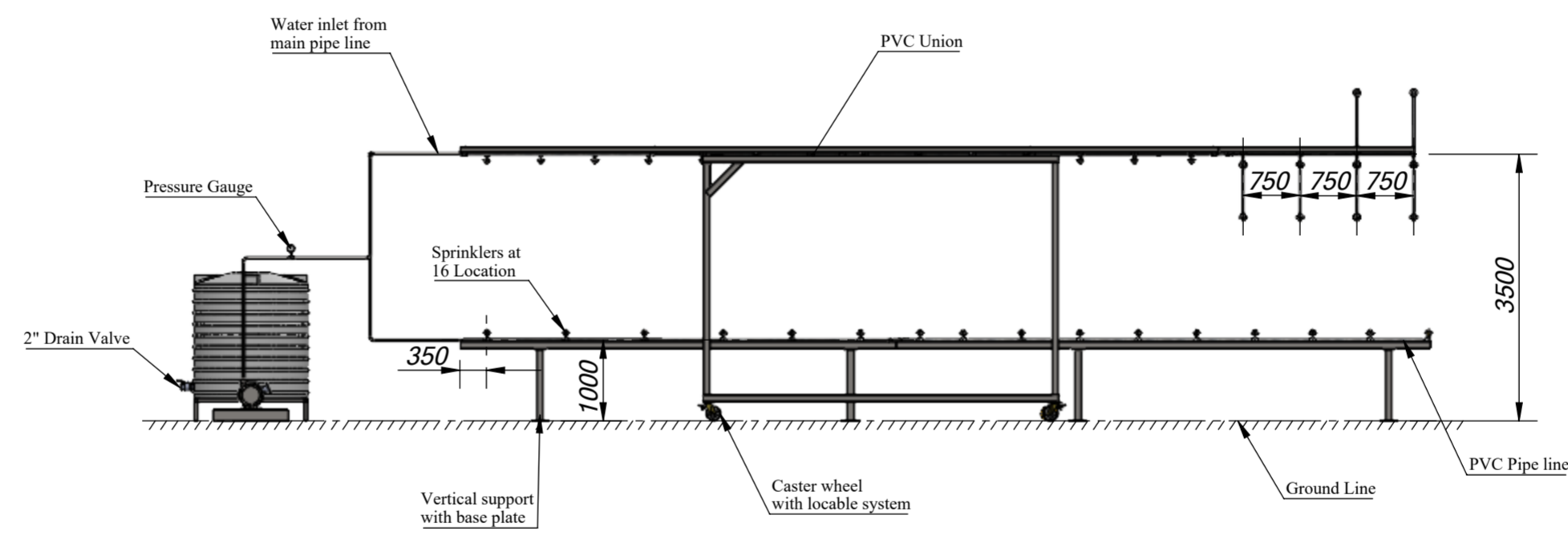


THIS DWG. IS SOLE PROPERTY OF NEOMETRIX ENGINEERING PVT. LTD. UNAUTHORISED USE OF THIS DWG. OR MAKING PRODUCT AS PER THIS DWG. WITHOUT OUR PERMISSION OR ANY OTHER MISUSE IS NOT PERMITTED.

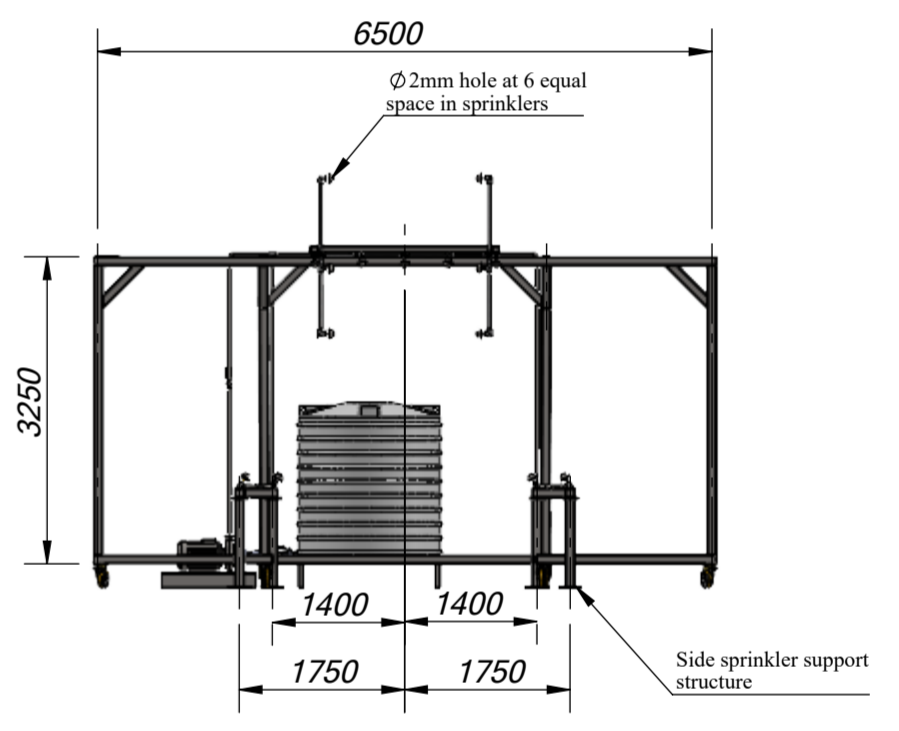
Sr No.	ITEM NAME	ITEM DESCRIPTION	MAKE	Model	QTY
1	WATER TANK	capacity -2000 LTR MOC-PVC	Supreme	-	2
2	shutoff valve	Line size-3" Working pressure-10kg/cm2,Media-Water	Supreme	-	1
3	ELECTRIC MOTOR & PUMP	Capacity / Power 4 kW (5.36 HP) , Flow -250 LPM,Max Working pressure: 10 Kg/cm2,Working media-Water	Grundfos	CM15-3 A-R-A-V-AVBV F-A-A-N	1
4	Filter - 60Mesh	Line size-3" , 60 MESH Filter strainer, Flow-250lpm,Working Pressure-10kg/cm2,MOC-SS 304	Neometrix	-	1
5	Pressure Gauge	Dial size-100mm,Range-0-10kg/cm2,connection size-1/2" BSPM	Wika	-	1
6	TOP NOZZLE WITH SPRINKLERS (SS 304)	Connection size-1/8" BSPP,Flow-1 lpm to 2lpm at 2 bar ,MOC-SS 304	Neometrix	NENZ114	82
7	SIDE NOZZLE WITH SPRINKLERS (SS 304)	Connection size-1/8" BSPP,Flow-1 lpm to 2lpm at 2 bar ,MOC-SS 304	Neometrix	NENZ114	32
8	Drain Valve	Line size-2",MOC-PVC	Supreme	-	1
9	Water line pipe-1"	Schedule -80,size-1"Max working pressure-10 kg/cm2,MOC-PVC	Supreme	-	100m
10	Water line pipe-2"	Schedule -80,size-1"Max working pressure-10 kg/cm2,MOC-PVC	Supreme	-	9m
11	Water line pipe-3"	Schedule -80,size-1"Max working pressure-10 kg/cm2,MOC-PVC	Supreme	-	6m
12	T Joint 3 Way-1"	Schedule-80,Size-1",Max Working pressure-10kg/cm2, MOC -PVC	Supreme	-	150
13	T Joint 3 Way-2"	Schedule-80,Size-2",Max Working pressure-10kg/cm2, MOC -PVC	Supreme	-	5
14	T Joint 3 Way-3"	Schedule-80,Size-3",Max Working pressure-10kg/cm2, MOC -PVC	Supreme	-	10
15	Elbow-1"	Schedule-80,Size-1",Max Working pressure-10kg/cm2, MOC -PVC	Supreme	-	15
16	Elbow-2"	Schedule-80,Size-2",Max Working pressure-10kg/cm2, MOC -PVC	Supreme	-	5
17	Elbow-3"	Schedule-80,Size-3",Max Working pressure-10kg/cm2, MOC -PVC	Supreme	-	5
18	Socket-1"	Schedule-80,Size-1",Max Working pressure-10kg/cm2, MOC -PVC	Supreme	-	40
19	Socket-2"	Schedule-80,Size-2",Max Working pressure-10kg/cm2, MOC -PVC	Supreme	-	5
20	union	Schedule-80,Size-1",Max Working pressure-10kg/cm2, MOC -PVC	Supreme	-	10
21	Holding CLAMPS	Schedule-80, MOC-PVC	Supreme	-	120
22	Caster Wheel	Dynamic carrying capacity# [N]- 7500,Height from ground-250 mm	STANDARD	-	6
23	Square Pipe (SS-304)	Dimension-100mm*100mm*3mm,MOC-SS-304	Jindal	-	130m
24	Square Pipe (SS-304)	50mm*50mm*3mm,MOC-SS-304	Jindal	-	70m
25	Reducing Tee	Heavy Duty, Reducing Line size -(3 inch *1 inch)	Supreme	-	5
26	Reducing Elbow	Heavy Duty, Reducing Line size -(3 inch *1 inch)	Supreme	-	5
27	HOSE with both side fitting	Line size-2", Working pressure-10kg/cm2, unit length - 1 M,End Fitting -2" BSP	Parker	-	2M
28	Solvent Tank Connector	Heavy Duty-Solvent solution	Supreme	-	2L
29	Flexibile Pipe	Size-3",MOC- PVC	Supreme	-	1
30	Flexibile Pipe	Heavy duty water Pipe-line size-1"	Parker	-	20m



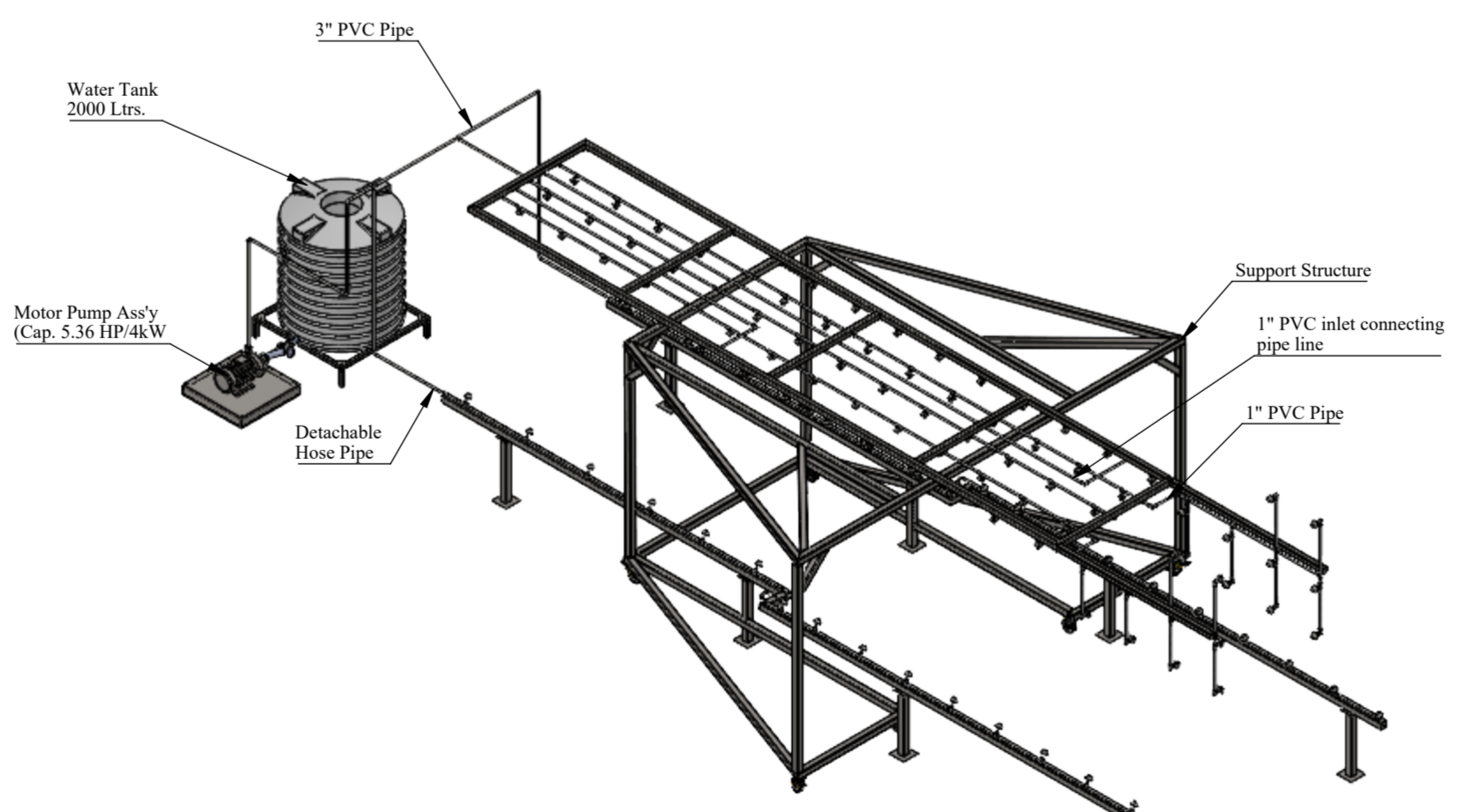
TOP VIEW



FRONT VIEW



SIDE VIEW



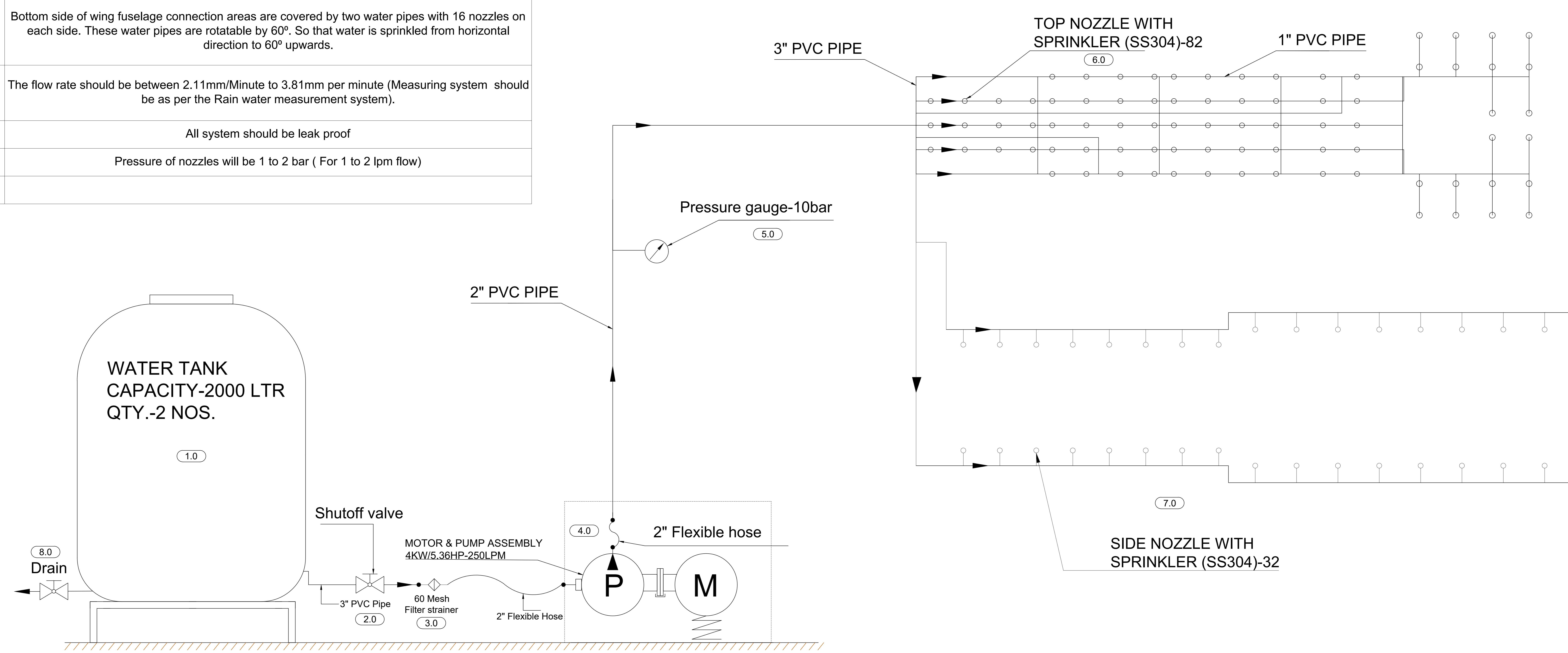
ISOMETRIC VIEW

NOTE:-
 1. ALL DIMENSIONS ARE IN MM.
 2. THIS IS TENTATIVE DRAWING, SUBJECT TO CHANGE

NEOMETRIX		NEOMETRIX ENGINEERING PVT LTD E-148, SECTOR 63, NOIDA, UP-201301 Tel No.: 0120 4500800 Fax No.: 0120 4500888 E-mail: contact@neometrixgroup.com Design Dept.: design@neometrixgroup.com	
TITLE	RAIN WATER TEST RIG	QA No.	
SUB-TITLE	GA DRAWING	Cross Ref Doc No.:	
SRS CODE	A4790	Customer Dwg Ref No.	
CUSTOMER	HAL-BANGALORE	NOTE :	
END USER	HAL-BANGALORE		
TD/PO. No.	--	DATED	
PROJECTION	DRWN	M.F	01/05/2023
CHK.	P.N		01/05/2023
APPR.	S.P.S		01/05/2023
SIZE	SCALE	SHEET No	NEO DWG No.
A3	NFS	01	T-DAP-A4790-GA DRAWING
		02	03

THIS DWG. IS SOLE PROPERTY OF NEOMETRIX ENGINEERING PVT. LTD.
 UNAUTHORISED USE OF THIS DWG. OR MAKING PRODUCT AS PER THIS DWG.
 WITHOUT OUR PERMISSION OR ANY OTHER MISUSE IS NOT PERMITTED.

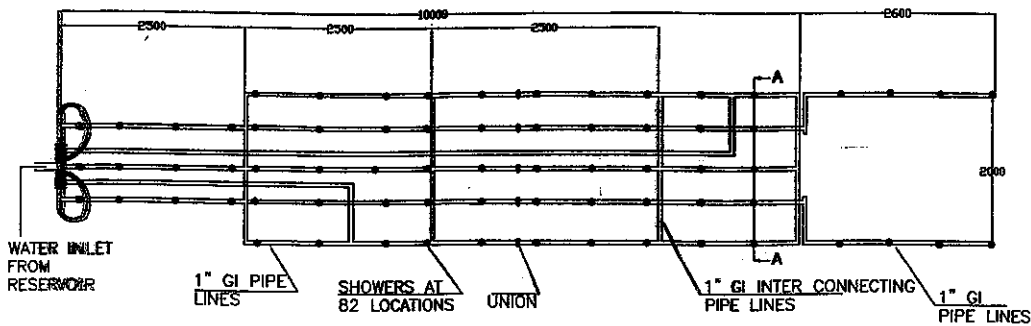
Functional Test / Acceptance Test -Rain Water Test Rig_A4790	
S. No.	Description
1	Bottom side of wing fuselage connection areas are covered by two water pipes with 16 nozzles on each side. These water pipes are rotatable by 60°. So that water is sprinkled from horizontal direction to 60° upwards.
2	The flow rate should be between 2.11mm/Minute to 3.81mm per minute (Measuring system should be as per the Rain water measurement system).
3	All system should be leak proof
4	Pressure of nozzles will be 1 to 2 bar (For 1 to 2 lpm flow)



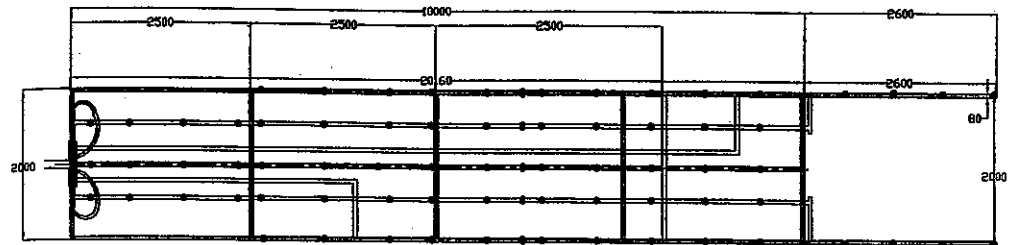
Note:-
 This is tentative drawing, Subject to change.

HYDRAULIC CIRCUIT

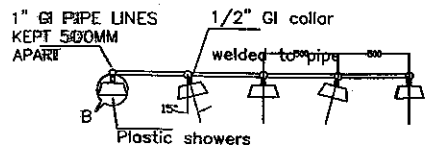
NEOMETRIX		NEOMETRIX ENGINEERING PVT. LTD. E-148, Sector-63, Noida, UP-201301 Tel. No. :- 0120-4500800 Fax No. :- 0120-4500888 Email :- contact@neometrixgroup.com	
MAIN TITLE	RAIN WATER TEST RIG	Q.A No.	
SUB-TITLE	HYDRAULIC CIRCUIT DIAGRAM	CROSS REF. DOC.	
CODE	A4790	CUSTOMER DWG. / REF. No.	
CUSTOMER	HAL	NOTE:	
END-USER	HAL		
PO NO			
DRAWN BY & DATE	M.F 31/05/2023	SIZE	SCALE
CHECKED BY & DATE	P.N 31/05/2023	A3	NTS
APPROVED BY & DATE	S.P.S 31/05/2023	SHEET No. 02	OF 02
		NEO. DWG. NO.	Rev.
		T-HDWG-A4790-RWTR	02



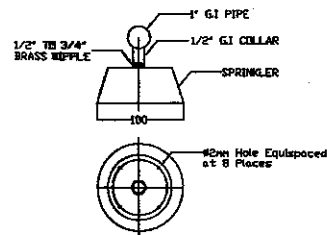
PIPE LINE SETUP (top view)



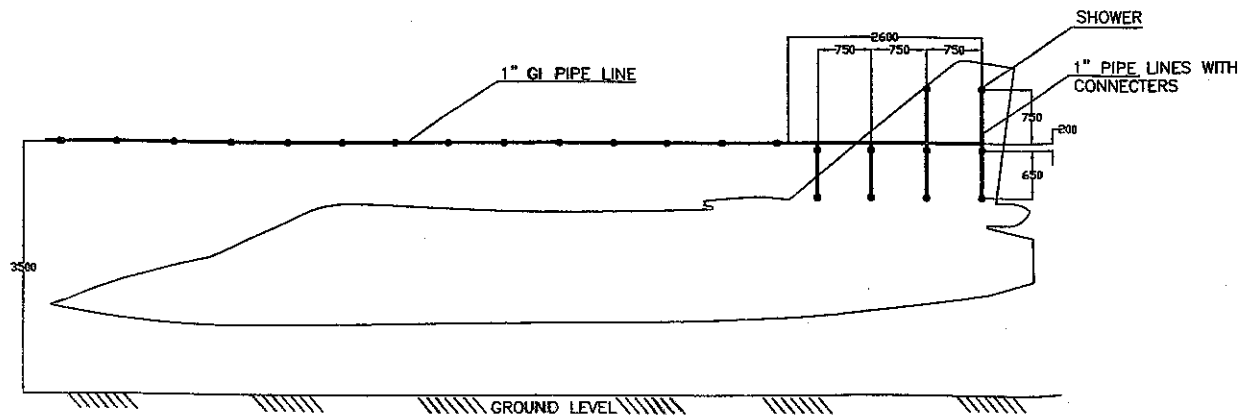
ASSEMBLY OF PIPELINES WITH TOP STRUCTURE



SECTION-AA



DETAIL VIEW OF SHOWER



PIPE LINE SETUP (side view)

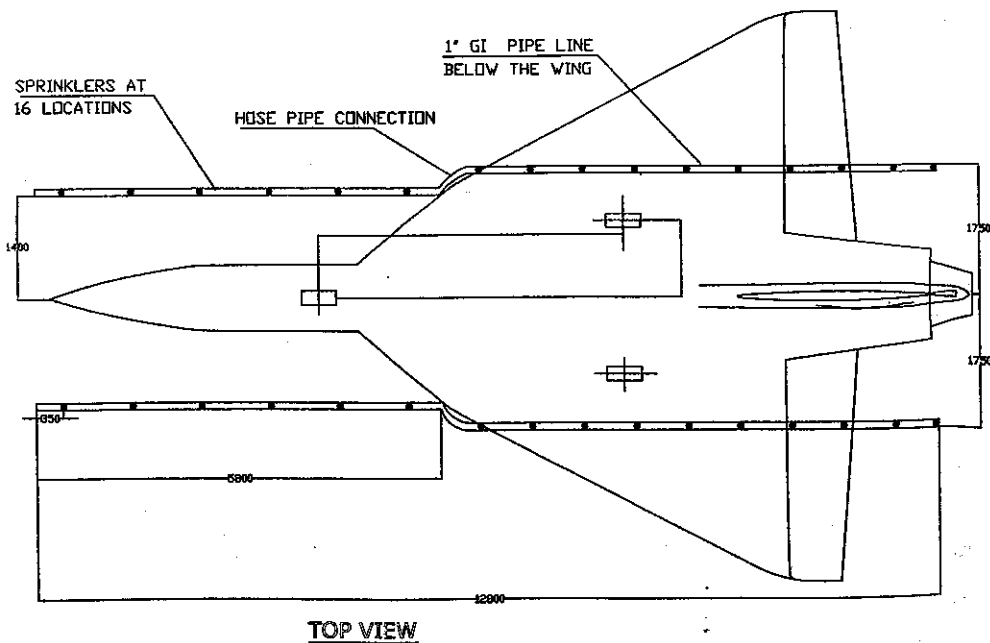
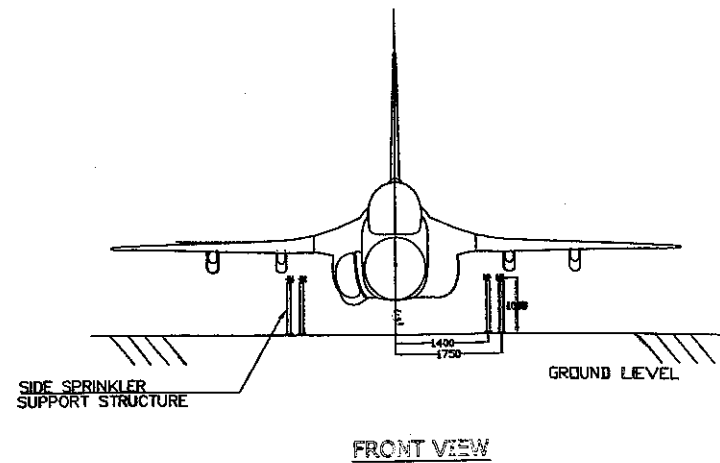
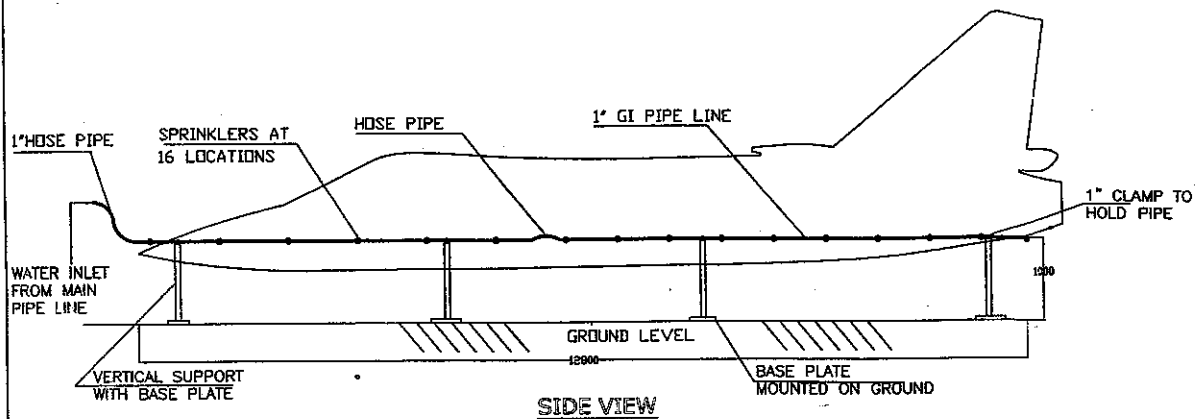
Sl No	COMPONENT DESCRIPTION	PART NO	QTY	REMARKS
1	GI PIPELINES	---	5	
2	1/2" GI COLLAR	---	82	
3	BRASS NIPPLE	---	82	
4	PLASTIC SHOWER	---	82	
5	HOSE PIPE	---	16	
6	UNION	---	3	
7	END CAPS	---	---	
8	HOSE NIPPLE	---	---	
9	SUPPORT STRUCTURE	---	1	
10	SUPPORT COLUMN	---	4	DETACHABLE
11	HOLDING CLAMPS	---	35	

ADA AERONAUTICAL DEVELOPMENT AGENCY,
 ACE, AIRFRAME, BANGALORE - 560 017

DIMENSIONS IN mm EXCEPT NOTED

MATERIAL	SPEC.	HEAT TREAT
DRAWN	MANJU	NO. REQ
DESIGN	B G SUNIL	NEXT ASSEM
APPROVAL	(Signature)	TITLE
WEIGHT		(CHECKING WATER TIGHTNESS BY SPRINKLING)
THIRD ANGLE PROJ. SCALE	DWG. NO.	SHT. 1 OF 4

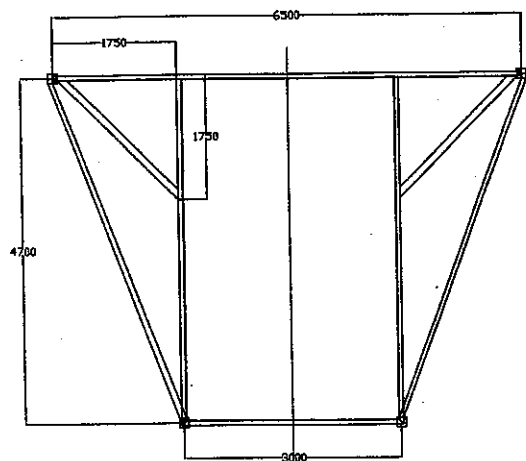
NTS AF-CD-201-000



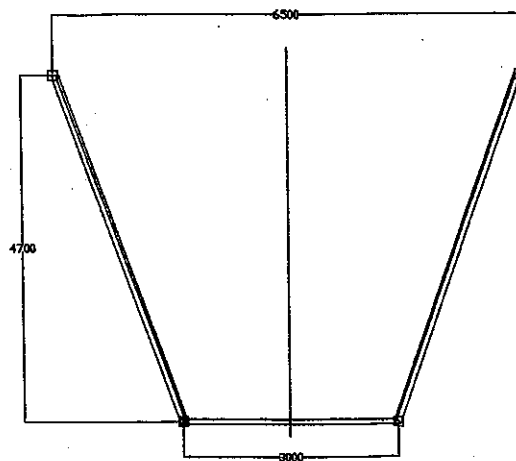
Sl. No.	COMPONENT DESCRIPTION	PART NO.	QTY	REMARKS
1	GI PIPELINES	---	2	
2	1/2" GI COLLAR	---	32	
3	BRASS NIPPLE	---	32	
4	PLASTIC SHOWER	---	32	
5	HOSE PIPE	---	6	
6	UNION	---	2	
7	END CAPS	---	---	
8	HOSE NIPPLE	---	---	
9	SUPPORT STRUCTURE	---	4	
10	CLAMPS	---	12	

ADA AERONAUTICAL DEVELOPMENT AGENCY,
 ACG, AIRFRAME, BANGALORE - 560 017
 DIMENSIONS IN MM EXCEPT NOTED

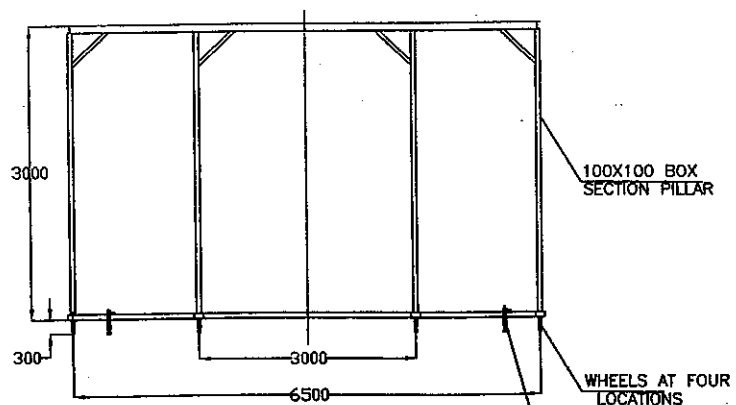
MATERIAL	SPEC.	HEAT TREAT
DRAWN MANJU A-2	NO. REQ. 1	NEXT ASSEM.
DESIGN B G SINIL	TITLE TEST RIG(SIDE)	
APPROVAL	(CHECKING WATER TIGHTNESS BY SPRINKLING)	
WEIGHT	DWG. NO.	SHT. 2 OF 4
THIRD ANGLE PROJ. SCALE	NTS	AF-CD-201-000



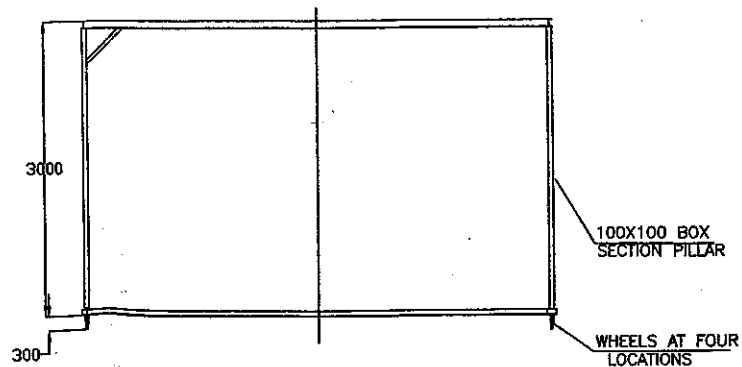
TOP VIEW



BOTTOM VIEW

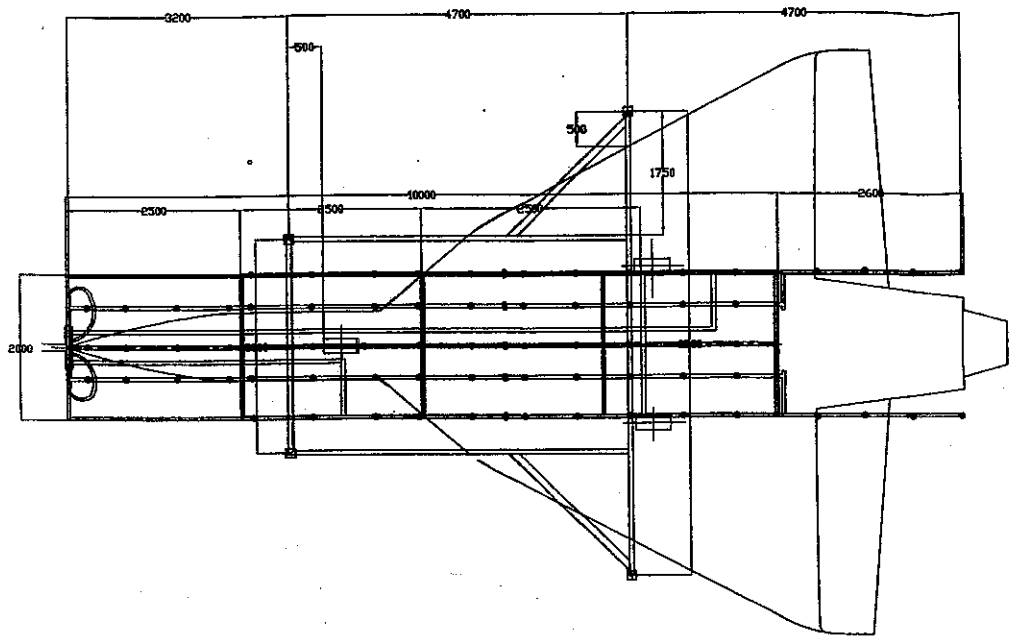


FRONT VIEW



SIDE VIEW

ADA AERONAUTICAL DEVELOPMENT AGENCY, AGG. AIRFRAME, BANGALORE - 560 017 DIMENSIONS IN mm EXCEPT NOTED			
MATERIAL	SPEC.	HEAT TREAT	
DRAWN	MANJU	NDREW	NEXT ASSEM.
DESIGN	B G SURU	1	
APPROVAL		34	MOVABLE SUPPORT STRUCTURE (CHECKING UNDER SQUARENESS BY SPRINGING)
WEIGHT		DWG. NO.	SHT. 3 OF 4
THIRD ANGLE PROJ. SCALE	NTS		AF-CD-201-000



ADA AERONAUTICAL DEVELOPMENT AGENCY, ACG, AIRFRAME, BANGALORE - 560 017 DIMENSIONS IN cm EXCEPT NOTED			
MATERIAL	SPEC.	HEAT TREAT _____	
DRAWN	MANJU	NO. REQ	NEXT ASSEM.
DESIGN	B G SUNIL	1	
APPROVAL		TITLE TEST RIG ASSY	
WEIGHT		(CHECKING WATER TIGHTNESS BY SPRINGING)	
THIRD ANGLE PROJ. SCALE	DWG. NO.	SHT. 81 OF 11	