

Dynamic Snubber Shock Arrestor Test Facility

SOFTWARE SCREEN GUIDE



INTRODUCTION

The Dynamic Snubber Test Facility is a cutting-edge testing solution engineered by Neometrix Defence Limited to ensure the performance and reliability of hydraulic and mechanical snubbers. These components play a critical role in safeguarding piping systems, nuclear power plants, and other sensitive infrastructure against seismic forces and dynamic loads.

This advanced facility is designed for in-service inspections (ISI) of snubbers, as mandated by ASME BPVC Section XI standards. It ensures that snubbers maintain their performance over their operational life, providing reliable support to systems with diameters ranging from 15 NB to 800 NB. Load capacities vary between 17.5 KN and 240 KN, and stroke lengths range from 140 mm to 245 mm, depending on application requirements.



NEOMETRIX USER MANAGEMENT

LOGIN

User Name (Case Sensitive)

Password (Case Sensitive)

 Log In

 Add

 Delete

 Edit

 Change Password

 Back

Developed By: NEOMETRIX DEFENCE LIMITED, NOIDA.
Contact Us: contact@neometrixgroup.com

LOGIN SCREEN

Customer needs to login with their credentials provided to them for authentication. They can modify password from this screen and manage subusers.



AUTHENTICATION SCREEN

USER ID

PASSWORD

Show Password?



Log In



EXIT

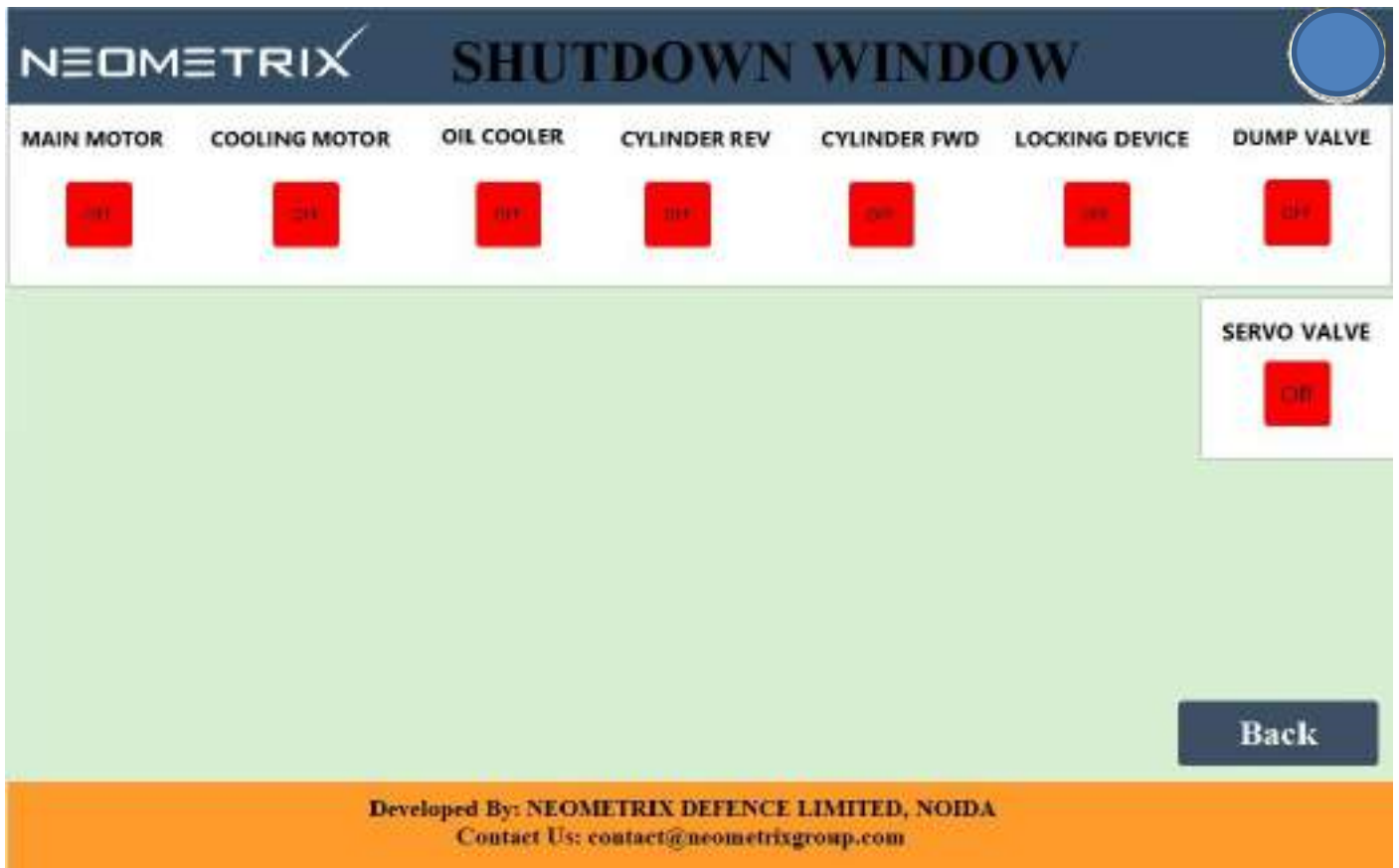
[Don't have an account?](#)



Add / Delete / Modify User

AUTHENTICATION SCREEN

Customer subuser needs to login with their credentials provided to them for authentication.



SHUTDOWN WINDOW

This screen depicts the overall health and system shutdown screen.

TEST CONFIGURATION WINDOW

Customer can customise the test as per requirement of testing parameters.

NEOMETRIX
SNUBBER SELECTION

SNUBBER DESIGNATION

Serial No.

PROCEED

SHUTDOWN MACHINE

EXIT

SPECIFICATIONS :

Snubber Designation : Expected Lost Motion Less Than (mm) :

Snubber Type: Expected Drag Force Less Than (kgf):

Load SSE (Kg) : Expected Drift Speed (mm/s):

Load GBE (Kg) : Test Load (Kg) :

Approx. Snubber Pin to Pin Dimension at mid-Position Excluding Bracket at Both End (mm) : Run Velocity (mm/min) :

Stroke About Mean Position (+/-) (mm) : Pressure Limit (Bar) :

Expected Sensitivity (V/g in mm/s or A/c in g) :

FACILITY

Unit	Snubber Designation
WTD	Snubber Location
IE Interval	Snubber Orientation
Mode of Testing	Snubber Make
Angular/Translation	Snubber Model
Equipment Tag No.	Snubber Capacity
Snubber T Facility	Snubber Stroke
Snubber Type	Test Load

Developed By: NEOMETRIX DEFENCE LIMITED, NOIDA
 Contact Us: contact@neometrixgroup.com

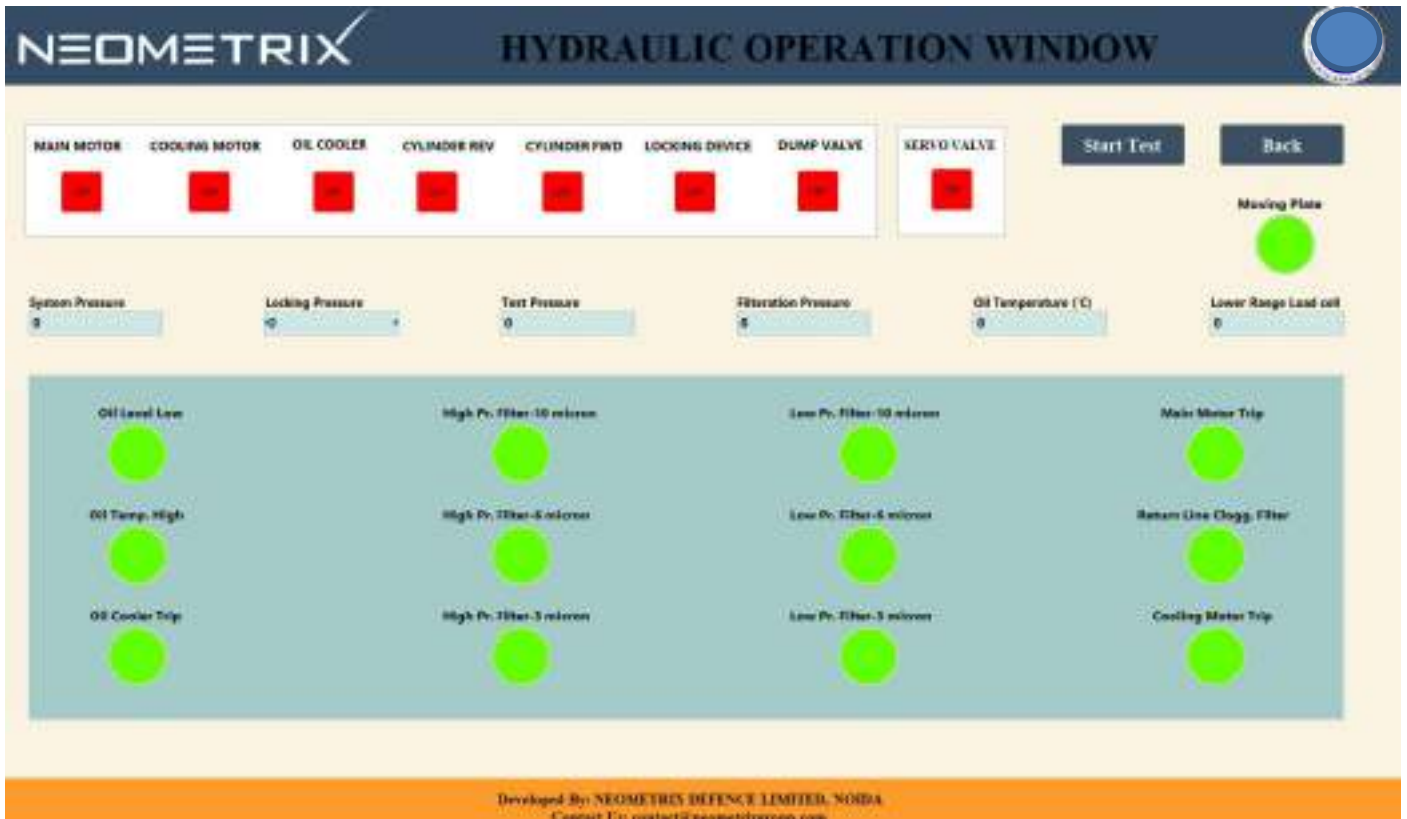
SNUBBER SELECTION WINDOW

Customer needs to select the snubber as per the test parameters. All the popular brand/make snubber models are already fed in the system. Data gets populated in the software on selection.



MAIN SCREEN WINDOW

Customer can switch to other screen as per requirement from the main screen window.



HYDRAULIC OPERATION WINDOW

Customer can check the health of the hydraulic circuits and accessories from the Hydraulic Operation Window.



TEST SELECTION WINDOW

Customer have options for Automatic Test or Manual Test. In Manual Test Mode Customer can choose the test required and generate data. All the tests are available for selections as per requirement.



TEST SCREEN WINDOW

Customer can view the data of the ongoing tests as per test selection. The reports are generated as per Test parameters. Simultaneously the Graphs are also generated. All the reports can be downloaded and printed for future references.

**THANK
YOU**

Neometrix Defence Limited

Email-contact@neometrixgroup.com Website- www.neometrixgroup.com

Mobile- [+91 7777-876-876](tel:+917777876876)