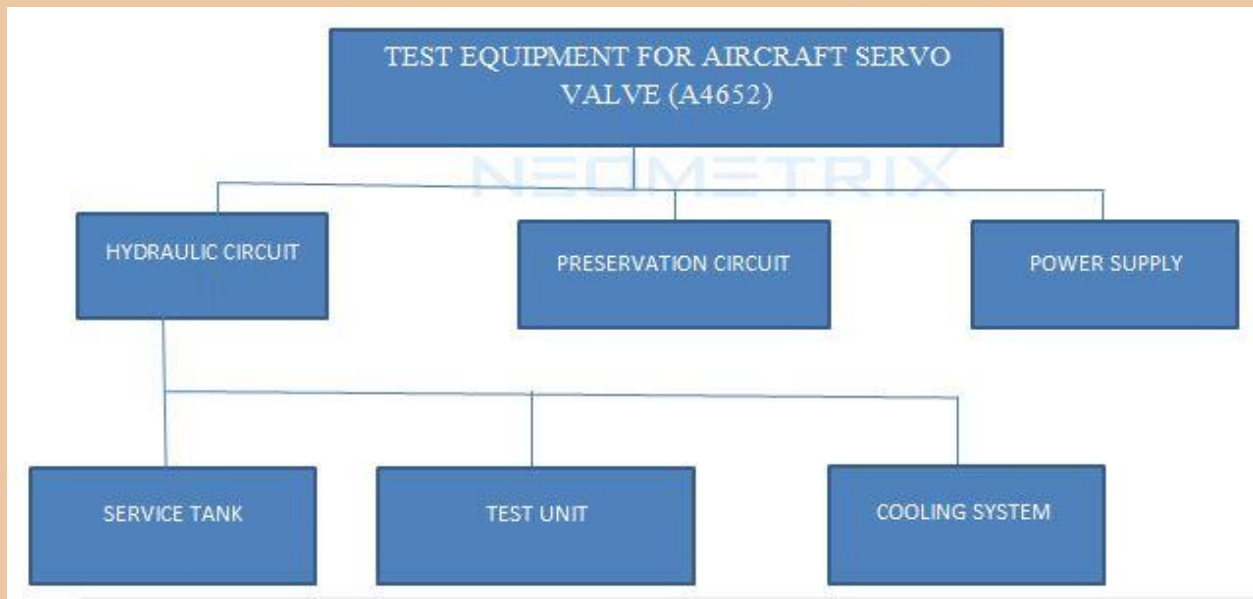


## About

### Test Equipment For Aircraft Servo Valve

- ❖ This test equipment is meant for functional testing and priming of Aircraft unit with ATF at room temperature and at 120° C temperature.



- ❖ The Test Equipment is sub-divided into following Sub-sections :-

1- **Hydraulic Circuit** – The functions of the fuel system is to:

- Feed the unit with fuel.
- Supply constant pressure lines of 120 Kgf/cm<sup>2</sup> & 250 kgf /cm<sup>2</sup>.
- Maintain drain pressure 1.8 to 2.7 kgf/cm<sup>2</sup>.

**This Circuit can be further divided into:**

- Tank Unit:** This includes minimum 100 liters Tank & 50 liters Tank (for ATF)
- Pump Unit:** – This includes Loading Section, inlet from Pump (rated 10 kgf/cm<sup>2</sup>) to Test Unit (rated 120 kgf/cm<sup>2</sup>, 30 LPM & 250 kgf/cm<sup>2</sup>, 15 LPM & 50 kgf/cm<sup>2</sup>, 30 LPM )
- Test Equipment Driving Unit:** This includes Test Equipment driving motor (7.5 KW)
- Drain Unit:** This unit consists of Pilot operated pressure relief valve which maintains a Pressure of

# NEOMETRIX

1.8 to 2.7 kgf/cm<sup>2</sup> in the drain line.

e) **Cooling system**:-this system is consist of plate type heat exchanger ,cooling media -water

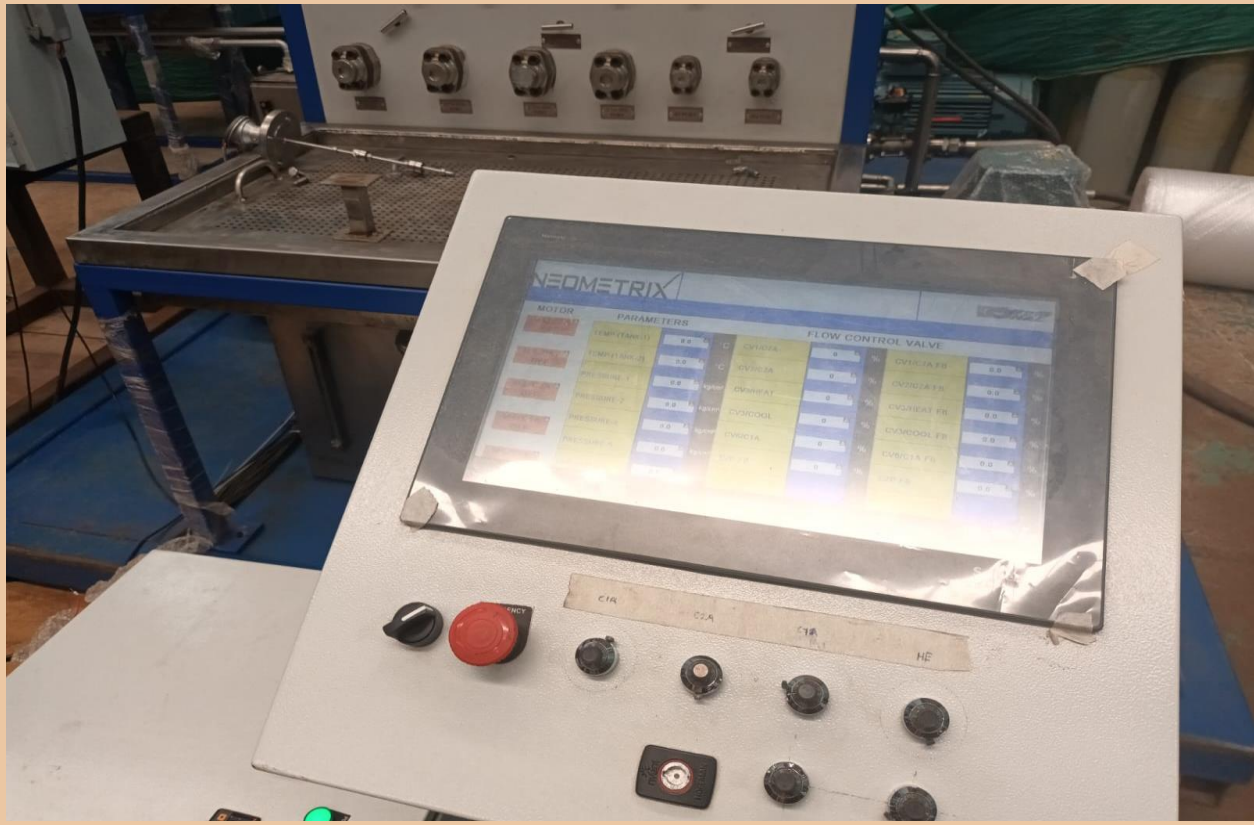
**2- Preservation Circuit** – Includes Circuit which is used to Provide separately.

**This Circuit can be further divided into:**

a) **Tank Unit:** This includes minimum 50 litre Tank (for ATF)

b) **Pump Unit:** – This includes Loading Section, inlet from Pump (rated 10 kgf/cm<sup>2</sup>) to Test Unit (rated 50 kgf/cm<sup>2</sup>,30 LPM )

**3- Power Supply:-** 27 V DC power supply.



# NEOMETRIX

## TECHNICAL DETAILS

Items	Specifications
ATF Tank	400&150 Litre
Various Types Valves:	Ball Valve, Constant Pressure Valve, Pressure Relief Valve, Pilot Pressure Relief Valve, Needle valve
Tank Unit:	This includes minimum 50 litre Tank (for ATF)
Pump Unit:	This includes Loading Section, inlet from Pump (rated 10 kgf/cm <sup>2</sup> ) to Test Unit (rated 50 kgf/cm <sup>2</sup> , 30 LPM )
Power Supply:-	27 V DC power supply.
Working Fluid	ATF (Aviation Turbine Fluid)
Maximum Working pressure of fluid	204 kgf/cm <sup>2</sup>
Working Temp	20 to 120 deg C
Fineness Of Filtration	6- micron
Phase	3
Voltage	415±10%
Frequency	50±1Hz
Overall dimension of the rig (in mm) L×W×H	2300×950×2250



NEOMETRIX DEFENCE LIMITED, E-148, Sector-63, Noida India 201301

Email – [contact@neometrixgroup.com](mailto:contact@neometrixgroup.com), Contact No.- +91-0120-4500800, 7777-876-876



# NEOMETRIX

## Application

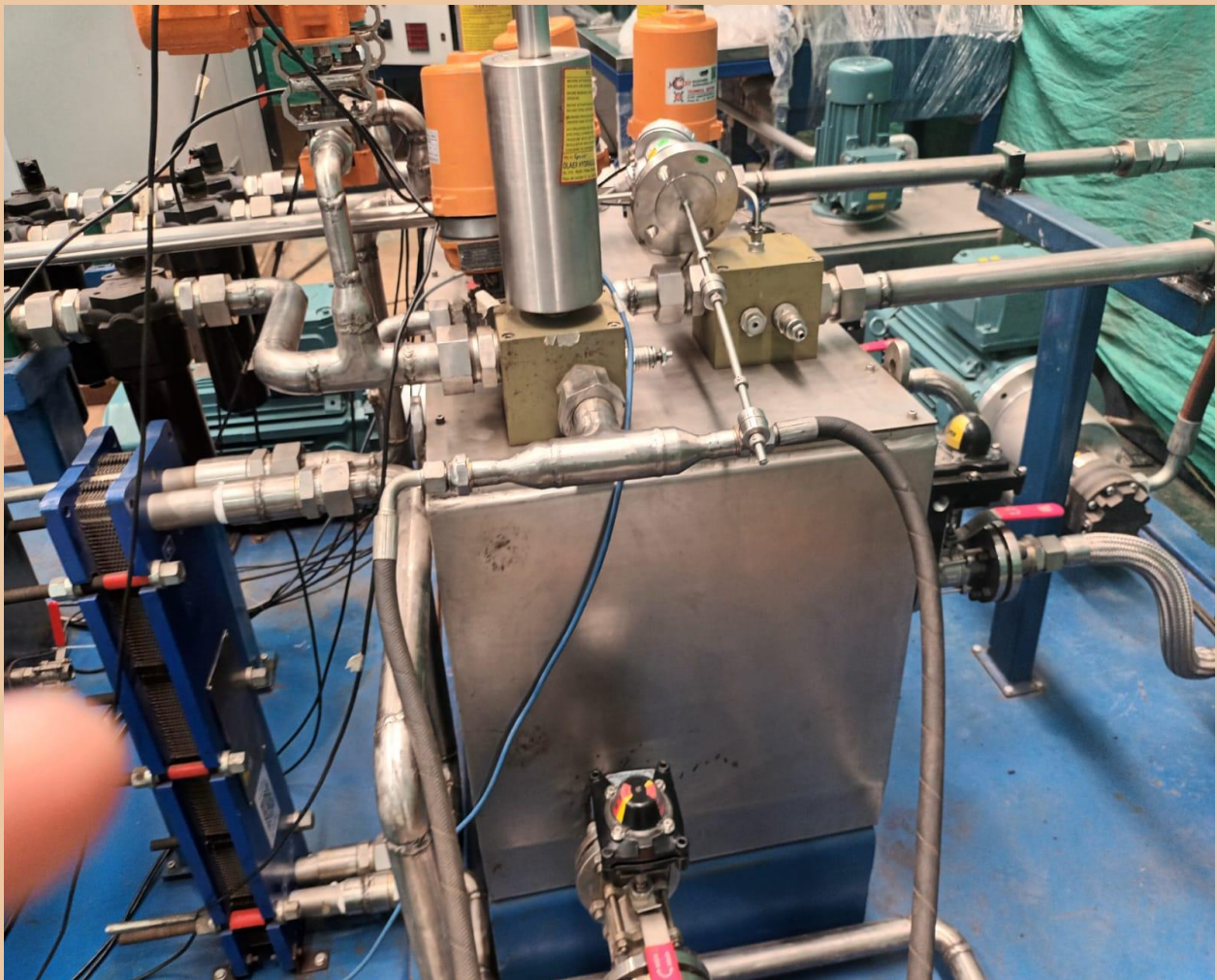
This test equipment for Aircraft Servo Valve.



# NEOMETRIX

## Key Features

1. Hydraulic Circuit
2. Preservation Circuit
3. Power Supply
4. Test Equipment Driving Unit
5. Cooling system



NEOMETRIX DEFENCE LIMITED, E-148, Sector-63, Noida India 201301

Email – [contact@neometrixgroup.com](mailto:contact@neometrixgroup.com), Contact No.- +91-0120-4500800, 7777-876-876